

your global
laboratory supplier

LABORTOPS

valid until 31. 12. 2025

WENK
Lab.Tec
LABORATORY TECHNOLOGIES GmbH

memmert



Universal Oven UN see page 12

from **899 €**



Vacuum oven VO see page 30

from **5.400 €**

2 < Temperature measurement
3 < pH Measurement
4 < Filtration
5 < Glassware
6-7 < Sampling
8-9 < Analytical measurement
10 < BOD
11 < PFAS analysis

12-13 < Heating, cooling
14-15 < Genomics / Proteomics
18, 22 < Liquid Handling
12-13 < General laboratory supply
19 < Waste disposal
20 < PPE
21 < Cleaning
23 < Microbiology

24 < Centrifugation
25 < Ultrapure water
26-27 < Stirring, shaking, mixing
28-29 < Optics
30 < Vacuum technology
31-32 < Weighing

Temperature logger, testo 175-H1



2-channel temperature and humidity data logger with external humidity sensor (NTC/capacitive humidity sensor)

- Professional long-term monitoring of temperature and humidity in work and storage rooms

Specifications

Channels:	2 x internal (stump)
Measurement units:	°C, °F, %r.F., %RH, °C _d , g/m ³
Measuring ranges:	
Temperature (NTC):	-20 ... +55 °C
Humidity (capacitive):	0 ... 100% r.h.
Dew point:	-40 ... +50 °C _d
Operation and storage temperature:	-20 ... +55 °C
Battery type:	3 x AIMn Type AAA or Energizer
IP code:	IP 54
Meas. cycle:	10sec - 24h
Memory:	1 mio. measurement values

Type	PK	Cat. No.
testo 175-H1	1	6.242 911

Digital hand held thermometer TTX 200



For measuring the core temperature with a fixed probe with a cable and a handle.

- Very large display with large figures
- Factory calibration certificate

Specifications

Temperature range:	-30 ... +199.9 °C
Accuracy:	±0.5 °C (-30 ... +100 °C), otherwise ±1%
Sensor length/diam.:	120 mm/3 mm
Cable length:	600 mm
Working temperature:	-20 .. +60 °C
Dimensions (L x W x H):	127 x 60 x 16 mm (without sensor)
Weight:	approx. 220 g
Power supply:	CR 2032
Protection class:	IP 55

Type	PK	Cat. No.
TTX 200	1	6.291 272

Wireless min./max. alarm thermometer type 13090



Wireless min./max. thermometer for monitoring refrigerators and freezers for quality assurance.

- Triple display for current, min./max. temperature, as well as indoor/outdoor and wireless temperature
- Adjustable Hi/Low alarm

Scope of supply: Bottle temperature sensor with 1 m cable, wireless temperature sensor (transmitter)

Temperature range (internal):	0 ... 50 °C
Temperature range (external, wireless):	-40 ... 50 °C
Temperature range (external, cable):	-50 ... 70 °C
Resolution:	0.1 °C
Wireless distance:	50 m (open field), 10 m (refrigerator)

Type	PK	Cat. No.
13090	1	6.325 021

Combi infrared and insertion thermometer TLC 750i-V2



Very simple operation

Handy infrared thermometer for non-contact measurement of surface temperature or core temperature with the foldable insertion probe.

- Practical pocket size for daily use
- Backlit display allows reading in dark environment
- Rotating display makes it easy to read the measured value
- Double laser pointer
- HACCP and DIN EN 13485 compliant, incl. calibration certificate
- Waterproof housing (IP 65)



Temperature infrared:	-50 ... 250 °C
Resolution infrared:	0.1 °C
Accuracy sensor:	±0.5 °C (-30 ... 99 °C)
Accuracy infrared:	±1.0 °C (0 ... 65 °C)

Type	PK	Cat. No.
TLC 750i-V2	1	6.491 695

Multiparameter meters MultiLab® Pro IDS



- 2- or 4-channel device
- No electrode change necessary
- 7" touch screen
- Suitable for IDS electrodes



Digital multiparameter meter with up to 4 galvanically isolated measuring channels for pH, ORP, mV, conductivity, oxygen, ISE and turbidity measurements. This allows up to 4 identical or different parameters to be measured simultaneously. Ideal for demanding tasks, even in critical (GxP) areas. The brilliant 7" touch display with special touchscreen glass is resistant to alcohol and disinfectants and can be operated with gloves. Predefined methods, automated documentation, metadata backup and onboard manual simplify handling and optimise the workflow.

- Wireless-ready for Intelligent Digital Sensors (IDS) modules
- Digital sensor recognition
- Wired or wireless sensor connection possible
- Preset and definable buffer sets
- QSC calibration
- AutoRead function
- LIMS ready: easy integration into existing LIMS systems
- Stored metadata is securely transferred via the LAN network
- Data export also as PDF/A, JSON and csv
- Interfaces: 2 x USB-A and 1 x Ethernet
- GxP-compliant



Scope of supply:

MultiLab® Pro 20 IDS S2: Multiparameter meter with 2 measuring channels, pH electrode SenTix® 980, digital conductivity measuring cell TetraCon® 925, pH buffers STP 4, STP 7 and STP 10 Trace, 3 mol KCl solution, conductivity standard 1413 µS/cm, stand, universal power supply

MultiLab® Pro 40 IDS S4: Multiparameter meter with 4 measuring channels, pH electrode SenTix® 980, ORP electrode SenTix® ORP-T 900, digital conductivity measuring cell TetraCon® 925, digital oxygen sensor FDO® 925, pH buffers STP 4, STP 7 and STP 10 Trace, 3 mol KCl solution, conductivity standard 1413 µS/cm, stand, universal power supply

Type	Channels	PK	Cat. No.
MultiLab® Pro 20 IDS S2	2	1	4.712 712
MultiLab® Pro 40 IDS S4	4	1	4.712 715

pH buffer solutions at 20 °C/25 °C, certified reference material (CRM)



Certified reference material according to ISO 17034. The pH buffer solutions are colour-coded, and the uncertainty of measurement of ±0.01 pH was tested at 20 °C/25 °C. Supplied with a detailed certification report which includes traceability to NIST.

pH-value	Colour	Capacity	PK	Cat. No.
		ml		
4.00 at 20 °C	red	500	1	4.695 385
7.00 at 20 °C	yellow	500	1	4.695 386
10.00 at 20 °C	colourless	500	1	6.493 481
4.00 at 25 °C	red	500	1	4.695 403
7.00 at 25 °C	yellow	500	1	4.695 404
10.00 at 25 °C	colourless	500	1	6.493 482

LLG-Universal Indicator strips "Premium", in vial with snap lid



Flip-top vial is easy to open and close with one hand. The new LLG pH strips offer the utmost in convenience and ease of use in laboratory-grade testing. With a single colour match and a 12 mm reagent pad, these universal pH strips (0.0-14.0) belong in every lab.

Range	Package contents	PK	Cat. No.
pH			
0 ... 14	100 strips per vial with snap lid	100	9.129 808

LLG filter papers for qualitative analyses



Medium fast

- Made from 100% cellulose
- Filtration speed according to DIN 53137

Diam.	Filtration time	Pore size	PK	Cat. No.
mm	secs.	µm		
70	88	5 - 13	100	9.045 803
90	88	5 - 13	100	9.045 804
110	88	5 - 13	100	9.045 805
125	88	5 - 13	100	9.045 806
150	88	5 - 13	100	9.045 807
185	88	5 - 13	100	9.045 808
240	88	5 - 13	100	9.045 809

Qualitative Filters for beer analysis



Suitable for analytical methods in breweries to filter and analyse, based upon recommended procedures of the EBC (European Brewery Convention).

- Medium fast
- Grained surface

Further sizes on request.

Type	Diam.	Filtration time acc. to Herzberg	PK	Cat. No.
	mm	s		
Folded filter	185	110	100	4.006 207
Folded filter	240	110	100	4.006 208
Folded filter	320	110	100	4.006 209

Syringeless filters SEPARA



- Quick and easy to use
- Low sample loss



SEPARA integrates in one single device auto-sampler vial, filtration membrane, plunger, and cap/septa. The single step filtering process is efficient and saves time. PP vial with Ø 12 x 33 mm, Filtering capacity 0.48 ml, dead volume <30 µl, maximum operating temperature 50 °C

Membrane	Pore size µm	Colour	PK	Cat. No.
Nylon	0.22	light blue	100	6.287 339
PTFE	0.22	pink	100	6.287 340
Regen. Cellulose	0.22	grey	100	6.287 341
PVDF	0.22	yellow	100	6.287 342
PES	0.22	light green	100	6.287 343
Nylon	0.45	blue	100	6.287 344
PTFE	0.45	red	100	6.287 345
Regen. Cellulose	0.45	black	100	6.287 346
PVDF	0.45	orange	100	6.287 347
PES	0.45	green	100	6.287 348

Funnels, DURAN®



DIN ISO 4798. With short stem. Glass Type I/neutral glass as per USP, EP and JP. Autoclavable.

Diam.	For filter paper diam. mm	Height mm	DIN	PK	Cat. No.
35	45 - 55	60	4798	1	9.251 123
45	55 - 70	80		1	9.251 128
55	70 - 90	95	4798	1	9.251 133
70	110 - 125	125		1	9.251 138
80	125 - 150	140		1	9.251 141
100	150 - 185	180	4798	1	9.251 146
120	185 - 240	210		1	9.251 023
150	240 - 270	265	4798	1	9.251 157

Separating funnels, Squibb-pattern, borosilicate glass 3.3

ISOLAB
Laborgeräte GmbH



Supplied with a PTFE stopcock. With a PE conical stopper.

- ISO 4800
- NS necks according to DIN 12242 standard

Description	Capacity	Bore	NS	PK	Cat. No.
	ml	mm			
Graduated	50	2.5	19/26	1	6.236 317
Graduated	100	2.5	19/26	1	6.236 318
Graduated	250	4.0	29/32	1	6.236 319
Graduated	500	4.0	29/32	1	6.236 320
Graduated	1000	6.0	29/32	1	6.236 321
Graduated	2000	6.0	29/32	1	6.240 412

Stand for separating funnel, PP

ISOLAB
Laborgeräte GmbH



Suitable to hold all types of laboratory funnels and also separatory funnels with diameter from 60 up to 150 mm. Two tapered wedges are provided to ensure firm grip.

Description	PK	Cat. No.
Separating funnel holder	1	4.672 109

Disposable culture tubes, soda-lime glass, with screw cap

DURAN WHEATON KIMBLE
Excellence in your hands



From Soda-lime glass. With DIN thread and PP screw cap

Capacity	Outer diam.	Height	Wall thickness	DIN-Thread	PK	Cat. No.
ml	mm	mm	mm	GL		
6	12	100	1	14	100	7.021 547
12	16	100	1	18	100	7.021 548
22	16	160	1	18	100	7.021 549
32	18	180	1	18	100	7.021 550

LLG-Standing flasks with standard ground joint, borosilicate glass 3.3

LLG
121 °C

LLG
LABWARE



With a flat bottom and standard ground joint. White graduation and inscription. Acc. to DIN EN ISO 4797.

Nominal capacity	Dimensions (dia. x H)	Ground size		PK	Cat. No.
		mm	NS		
50	51 x 85	29/32		2	4.686 119
100	64 x 103	14/23		2	4.686 120
100	64 x 103	29/32		2	4.686 121
250	85 x 130	29/32		2	4.686 122
500	105 x 160	29/32		2	4.686 123
1000	131 x 187	29/32		1	4.686 124
2000	166 x 230	29/32		1	4.686 125

Petri dishes, DUROPLAN®, borosilicate glass 3.3

DURAN WHEATON KIMBLE
Excellence in your hands



With lid. DURAN®. Made of DURAN® borosilicate glass 3.3. The base and lid are completely flat on both the outside and inside, free of bubbles and cords. The glass is type 1/neutral glass, as specified by USP/EP, and JP. Autoclavable. DIN 13132.

Ext. diam.	Height	PK	Cat. No.
mm	mm		
60	20	1	9.170 141
80	20	1	9.170 143
100	15	1	9.170 146
100	20	1	9.170 148
120	20	1	9.170 151
150	30	1	9.170 153



Sampler Tubes, V4A stainless steel



Sampler for free flowing, bulk goods up to approx. 1cm diameter.

- also for coarse-grained bulk goods
- corresponds to ISTA standard for seed lengths of 10 mm and 5 mm

Diam.	Length	PK	Cat. No.
mm	cm		
40	40	1	6.200 394
40	80	1	6.204 492

Chemistry scoop, PP, with rod handle



For aggressive liquids, complete with strong handle made of polypropylene.

Capacity	Stem diam.	Stem	PK	Cat. No.
ml	mm	mm		
250	20	1000	1	9.303 840
600	20	1000	1	9.303 842
1000	20	1000	1	9.303 844

Disposable spatulas LaboPlast®/SteriPlast®, PS



The sample spatula is ideal for sampling powders, granulates and pastes.

- Individually packed
- Production, assembling and packaging acc. to Cleanroom class 7 (10000)
- According to EU food and FDA guidelines

Type	Sterile	Length	Imm. depth	PK	Cat. No.
		mm	mm		
LaboPlast®	-	263	150	10	6.265 035
SteriPlast®	+	263	150	10	6.265 047

Disposable samplers for solids, HDPE



For contamination-free samples. They are cleanroom-manufactured and individually packed. Gamma-sterilised versions are also available.

For direct removal and filling of free-flowing powders and small-grain granulates.

Type	Description	Length	PK	Cat. No.
		mm		
DispoLance	sterile	300	20	6.282 459
DispoLance	non-sterile	300	20	6.282 458
DispoLance	sterile	500	20	6.282 461
DispoLance	non-sterile	500	20	6.282 460

Sampling Dippers DispoLadle, HDPE

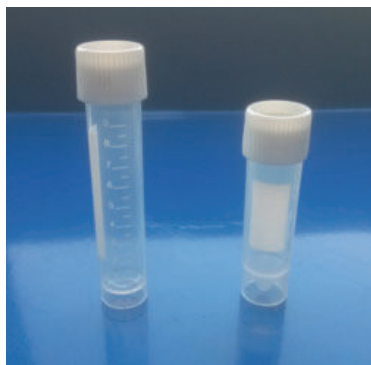


The scaled scoop with embossing can be used for measuring. It shows contents in increments of 10 ml, up to 200 ml.

- Cleanroom manufactured
- Individually packaged
- Optionally sterilised by gamma rays

Description	Capacity	Length	PK	Cat. No.
	ml	mm		
Standard	200	500	20	6.284 537
Sterile	200	500	20	6.284 538
Standard	200	1000	20	6.284 539
Sterile	200	1000	20	6.284 540

LLG-Transport tubes, PP, with screw cap



For convenient storage and dispatch of samples.

- Conical bottom
- Free standing
- Printed graduation
- 1 1/4 turn thread design for super fast screwing

Capacity ml	Outer diam. mm	Height with cap mm	PK	Cat. No.
5	16	60	100	6.265 667
10	16	80	100	6.265 668

LLG-Sample containers, with screw cap, PP



White, with screwed-on lid.
For storage or transport of samples.

Nominal capacity ml	Ø with Cover mm	Height mm	PK	Cat. No.
30	58	19	10	9.402 310
75	58	47	10	9.402 313
310	81	81	10	9.402 318
600	119	67	10	9.402 321
1250	119	130	5	9.402 324

Sample bags Whirl-Pak®, PE, sterile



Whirl-Pak® bags are sterile polyethylene laboratory sample bags used to transport samples for biological testing and other applications. Available with or without write-on label. With integrated wire closing system. Temperature range: -210 to 82 °C.

Nominal capacity ml	Dimensions (D x W) mm	Description	PK	Cat. No.
58	75 x 125	with write-on label	500	7.058 005
118	75 x 185	with write-on label	500	7.077 212
532	115 x 230	with write-on label	500	7.058 120
710	150 x 230	with write-on label	500	6.242 083
2721	254 x 380	with write-on label	250	6.266 304
3637	254 x 508	with write-on label	250	6.266 305
5441	380 x 508	with write-on label	100	6.257 989
58	75 x 125	without write-on label	500	6.091 055
118	75 x 185	without write-on label	500	9.404 234
207	95 x 180	without write-on label	500	7.981 345
532	115 x 230	without write-on label	500	9.404 235
710	150 x 230	without write-on label	500	6.228 639
1065	125 x 380	without write-on label	500	9.404 236
1242	150 x 380	without write-on label	500	6.266 302
2041	190 x 380	without write-on label	500	6.305 117

Water sample bottles, PET



With and without sodium thiosulfate



- Sterile
- Leak-proof
- Thick walls
- Crush-resistant corners

Nominal capacity ml	Description	PK	Cat. No.
125	without sodium thiosulphate	180	4.712 663
250	without sodium thiosulphate	108	4.712 664
500	without sodium thiosulphate	84	4.712 665
1000	without sodium thiosulphate	30	4.712 666
125	without sodium thiosulphate *	130	4.712 667
250	without sodium thiosulphate *	72	4.712 668
500	without sodium thiosulphate *	42	4.712 669
1000	without sodium thiosulphate *	22	4.712 670
125	with sodium thiosulphate	180	4.712 671
250	with sodium thiosulphate	108	4.712 672
500	with sodium thiosulphate	84	4.712 673
1000	with sodium thiosulphate	30	4.712 674
125	with sodium thiosulphate *	130	4.712 675
250	with sodium thiosulphate *	72	4.712 676
500	with sodium thiosulphate *	42	4.712 677
1000	with sodium thiosulphate *	22	4.712 678

* Individually packed

Melting point apparatus, model MP-200D/MP-200D-HR

Cole-Parmer
an antylia scientific company



MP-200D

Supplied with 100 melting point tubes, open one end.

Specification

Number of samples:	2
Temperature range:	Ambient to 300 °C
Temperature accuracy:	±1.0 °C at 20 °C, ±2.5 °C at 300 °C
Display:	Three digit LED // Four digit LED
Display resolution:	1 °C // 0.1 °C
Display hold facility:	No // Yes
Ramp rates:	20 °C per minute to plateau, 2 °C per minute to melt // 20 °C per minute to plateau, variable between 1 and 10 °C per minute to melt
Dimensions (w x d x h):	160 x 220 x 170 mm
Net weight:	1.8 kg
Electrical supply:	230 V, 50 Hz, 75 W

MP-200D // MP-200D-HR

Type	PK	Cat. No.
MP-200D	1	9.950 177
MP-200D-HR	1	9.830 430

Melting point tubes for MP series

Cole-Parmer
an antylia scientific company



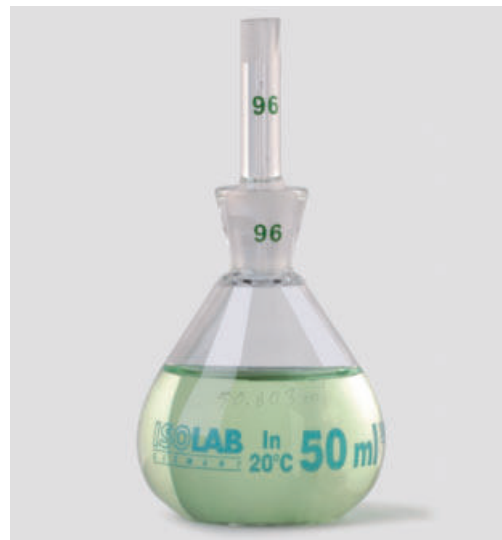
- Antimicrobial coating
- Up to 300 °C



Type	PK	Cat. No.
Melting point determination tubes (open on both sides)	100	6.236 492
Melting point determination tubes (closed at one end)	100	6.803 067
Melting point determination tubes (closed at both ends)	100	9.950 400

Pycnometers, Borosilicate glass 3.3, calibrated

ISOLAB
Laborgeräte GmbH



ISO 3507. Individually calibrated to contain (In) to 0.001 ml. Net volume capacity is engraved on the body. Each bottle is calibrated together with its stopper. In order to differentiate easily, both the body and the stopper have the same code numbers printed on them.

Capacity	PK	Cat. No.
ml		
5	1	4.008 327
10	1	6.241 602
25	1	4.008 328
50	1	6.241 603
100	1	4.008 329

Flame Photometer
FF-200D-I and FF-200D-R



- Low temperature flame photometer
- Supplied with filters



FF-200D-I

Single channel, low temperature flame photometer for use in industry, medicine and education. Can be operated with propane, butane, natural gas or liquid gas (LPG). With built-in electronic flame failure safety system for operational safety.

- Model FF-200D-I incl. Na, K, Ca, Ba and Li filters
- Model FF-200D-R incl. Na, K and Li filters
- 3 year warranty

Supplied with: Na, K, Li filters (model PFP7/C), additionally Ba and Ca filter (model PFP7), connecting hoses and clips, compressor plug, drain trap, fuses and operating/service instructions

Specifications

Range PFP7: 0 ... 199.9 ppm
Range PFP7/C: 120 ... 160 ppm Na, 0 ... 10 ppm K

Limits of detection

Na/K: < 0.2 ppm
Li: < 0.25 ppm
Ca: < 15 ppm
Ba: < 30 ppm
Reproducibility: < 1% (Coefficient of variation for 20 consecutive samples using 10 ppm Na set to a reading of 50)

Linearity: < 2% (when concentration of 3 ppm Na/K and 5 ppm Li are set to a reading of 100)

Specificity: Interference from Na, K and Li equal in concentration to test element will be < 0.5%

Recorder output: Nominal 1.00 V for a reading of 100.0
Air: 6 l/min at 1 Kg/cm² /14psi (oil and moisture free pressurised air)

Dimensions (W x D x H): 420 x 360 x 300 mm

Weight: 8 kg

Power supply: 190 ... 250 V, 50/60 Hz

Type	PK	Cat. No.
FF-200D-I	1	9.309 409
FF-200D-R	1	6.272 846

Laboratory refractometers
Abbatemat Essential



- Peltier temperature control
- Preset refractive index and Brix scale



Abbatemat 3001

The Abbatemat Essential line is budget-friendly with the best build quality and temperature control. All three instruments are suitable for liquids, viscous or solid substances, as well as turbid and dark substances. Fast concentration measurements due to a simplified user interface and predefined methods.

- Precise Peltier temperature control
- Up to 10 methods: refractive index and Brix preset, plus 8 optional methods
- Intuitive 7" Hybrid touchscreen
- Sapphire prism backed by a 25-year warranty

Type	Measuring range	Accuracy	PK	Cat. No.
Abbatemat 3001	1,33 ... 1,55 nD 0 ... 100 °Brix	±0,0001 nD ±0,05 °Brix	1	4.713 222
Abbatemat 3101	1,30 ... 1,66 nD 0 ... 100 °Brix	±0,00004 nD ±0,03 °Brix	1	4.713 223
Abbatemat 3201	1,26 ... 1,72 nD 0 ... 100 °Brix	±0,00002 nD ±0,015 °Brix	1	4.713 224

Standards for Flame photometers



Suitable for calibration, control, IQ/OQ and method validation. Compatible with all Flame Photometry Instruments. NIST traceable. HDPE bottles of 500 ml.

Type	Measuring range	PK	Cat. No.
Sodium / Potassium	100 / 100 mmol/L	1	4.012 215
Sodium / Potassium	120 / 2 mmol/L	1	4.012 216
Sodium / Potassium	140 / 5 mmol/L	1	4.012 217
Sodium / Potassium	160 / 8 mmol/L	1	4.012 218
Sodium / Potassium	160 / 80 mmol/L	1	4.012 219
Rinse solution	-	1	6.286 180

BOD sensor system



Measuring systems for the reliable determination of 90 to 999 ppm BOD. Complete with sensor heads and multi-position magnetic stirrer.

- The sensor heads are screwed directly onto the BOD bottles
- Automatic storage of 5 results in 24-hour intervals
- Measured readings in mg/l (ppm) can be read directly on the sensor at any time
- Protected against splashing water (IP 54)

Scope of supply BOD sensor system 6: 6-position magnetic stirrer, each 6 BOD sensors incl. batteries, 500 ml brown glass bottles, KOH reservoirs and magnetic stirring rods

Scope of supply BOD sensor system 10: 10-position magnetic stirrer, each 10 BOD sensors incl. batteries, 500 ml brown glass bottles, KOH reservoirs and magnetic stirring rods

Specifications

BOD range: 90 ... 999 ppm
 Display: LED (3 digits)
 IP code: IP 54

Type	Description	PK	Cat. No.
BOD sensor system 6	6 positions	1	6.317 212
BOD sensor system 10	10 positions	1	6.317 213
BOD sensor set	500 ml brown glass bottle with BOD sensor, KOH reservoir, stirring rod	1	4.666 791
BOD sensor	Single sensor	1	4.666 790

Dissolved oxygen bottles according to Winkler, soda lime glass



For the determination of dissolved oxygen in water. The measured capacity is specified to ± 0.01 ml. With a white labelling area. Each bottle and its stopper is marked with a unique, matching identification number.

Nominal capacity ml	NS	Snap-on clip	PK	Cat. No.
100 to 150	14/23	9.304 050	1	9.304 038
250 to 300	19/26	9.304 051	1	9.304 048

Clamps for oxygen determination bottles acc. to Winkler



Stainless steel, nickel-plated. For securing the NS stopper.

For bottles ml	For	PK	Cat. No.
100 ... 150	NS 14/23	1	4.684 046
250 ... 300	NS 19/26	1	4.684 047

HCL-Absorber, for COD determination



The glass filter devices are made of borosilicate glass 3.3 and can withstand acids, alkalis and solvents and even temperatures of up to 540 °C.

Ground size	PK	Cat. No.
NS 29/32	1	6.225 057



For PFAS analysis

LLG-Short thread vials ND9, PP

The LLG-Short thread vials are suitable for PFAS analyses. Free from polyhaloolefins.



Capacity	o.d. x Height	PK	Cat. No.
ml	mm		
0.3	11.6 x 32	100	4.008 262
0.7	11.6 x 32	100	4.712 515
1.5	11.6 x 32	100	4.712 514

LLG-Short thread seals ND9, PP, ready assembled

The LLG-Short thread seals are suitable for PFAS analyses.

- Cap made of PP
- Septa made of PP, silicone or polyimide
- Free from polyhaloolefins



Caps	Septa	PK	Cat. No.
blue, with hole	Silicone white/PP transparent	100	4.712 516
blue, with hole	Silicone white/PP transparent, slitted	100	4.712 517
transparent, with hole	Silicone white/PP transparent	100	4.712 518
transparent, with hole	Silicone white/PP transparent, slitted	100	4.712 519
blue, with hole	Silicone white/Polyimide orange	100	4.712 520

b.safe caps, GL45, PP/PPS, PFAS Analytic



Screw caps, with freely movable insert made of PP. Free from polyhaloolefins. 3 capillary connections (3.2 mm).

- Insert made of PP
- Fittings made of PE
- Ideal for PFAS analysis

Scope of supply: Cap, 2xfittings (PE), 3xblind fittings (PE), air valve with service life indicator



Capillary connections: 3
Neck thread: GL 45

Type	PK	Cat. No.
b.safe-Cap	1	4.694 468

Air valves, PP, PFAS Analytic



The integrated non-return valve avoids evaporation of solvents and lets flow ambient air into the bottle in case of vacuum.

- Free from polyhaloolefins



Thread	Life time	PK	Cat. No.
UNF 1/4" 28G	6 months	2	4.694 467

SPE columns, CHROMABOND PFAS



Special phase for SPE analysis. For enrichment of PFAS from water, textiles and sediments (contaminated soils). Polymeric combination phase with weak anion exchanger, highly porous, spherical particles.

Capacity	Filling quantity	Package	PK	Cat. No.
ml	mg			
3	120	30 Piece	30	4.712 701
3	120	250 Piece	250	4.712 702
6	300	30 Piece	250	4.712 703
6	300	250 Piece	30	6.320 451

EC analytical HPLC columns, NUCLEODUR PFAS/PFAS Delay



Reliable for PFAS

Hydrophobic reversed phase with distinct polar selectivity for special PFAS analysis. Suitable for high sensitivity LC/MS analysis. NUCLEODUR PFAS Delay columns trap and therefore delay system-related PFAS contaminants, ensuring trace-level analysis of PFAS in your samples. Suitable for high sensitivity LC/MS analysis.

Type	Particle size	Length	Int. diam.	PK	Cat. No.
	µm	mm	mm		
PFAS	3	100	2	1	4.712 704
PFAS Delay	5	50	2	1	4.712 705

Universal Ovens UN



Specifications

Type designation:	N = Natural convection
Working temperature range:	at least 5 °C above ambient to +300 °C
Setting temperature range:	+20 to +300 °C
Setting accuracy:	up to 99.9 °C: 0.1 °C/from 100 °C: 0.5 °C
Power supply:	230 V, 50/60 Hz

Type	Nom. capacity	Max. grids	Included grids	Internal dimensions (W x D x H) mm	External dimensions (W x D x H) mm	Rated capacity kW	Net weight kg	PK	Cat. No.
	L								
UN30	32	3	1	400 x 250* x 320	585 x 434** x 704	1.6	45	1	9.869 681
UN55	53	4	1	400 x 330* x 400	585 x 514** x 784	2.0	57	1	9.869 682
UN75	74	6	2	400 x 330* x 560	585 x 514** x 944	2.5	66	1	9.869 683
UN110	108	5	2	560 x 400* x 480	745 x 584** x 864	2.8	74	1	9.869 684

* Less 39 mm for fan

**Depth without door handle, please add 56 mm

Cooled incubators FOC series

Versatile cooled incubators with an auto-tuning temperature control system for optimal temperature stability.

- 2 internal sockets for further devices
- Wireless (WIFI) and wired connectivity
- Front 3 button panel (Set, "+", "-")
- Forced ventilation for uniform temperature distribution

Model FOC 200E: With internal transparent door

Scope of supply: Cooled incubator, shelves

Specifications

Temperature range:	3 ... 50 °C
Temperature accuracy:	±0.5 °C
Display:	3-digit LCD
Interface:	Wi-Fi, 2 x RS485
Power supply:	230 V, 50/60 Hz



Type	Nom. capacity	Included grids	External dimensions (W x D x H) mm	PK	Cat. No.
	L				
FOC 120E	109	2	540 x 550 x 912	1	6.316 555
FOC 200E	169	3	540 x 550 x 1263	1	6.316 556

Metal-cased heating mantles series KM-ME, with controller



LabHEAT® - Heating mantles for flasks, round bottom. Flexible glass yarn heating element in plastic plastic-coated, chemical-resistant metal housing. Max. heating element temperature 450 °C; 1.5 m power supply (earthed) cable and RCD (residual current detection); nominal voltage 230 V AC.



Capacity ml	Flask diam. mm	Rating W	Heating zones	PK	Cat. No.
100	64	100	1	1	9.642 521
250	85	150	2	1	9.642 522
500	105	200	2	1	9.642 523
1000	131	300	2	1	9.642 524
2000	166	500	2	1	9.642 525
3000	185	600	2	1	9.642 526
4000	207	750	2	1	9.642 527
5000	223	860	2	1	9.642 528
6000	236	1000	2	1	9.642 529
10000	279	1400	2	1	9.642 530
20000	345	2000	2	1	9.642 531

Recirculating cooler VALEGRO

Julabo



- Natural refrigerant
- Illuminated filling level indicator
- OLED touch display

New



The modern, user-friendly recirculating cooler is characterised by its compact design and precise temperature control:

- Natural refrigerant R290
- OLED touch display
- Continuously adjustable pump
- Timer
- Illuminated, easy-to-clean level indicator
- With casters
- Bath volume 1.5 to 3 liters
- Temperature: -20 ... 40 °C
- Temperature stability: ±0.3 °C
- Power supply: 200 ... 230 V, 50/60 Hz
- Weight: 26 kg
- Version with Ethernet interface available as an option

Type	Flow rate l / min.	PK	Cat. No.
VALEGRO 350	16	1	6.522 810
VALEGRO 500	19	1	6.522 811

High-performance freezers TSX Series, up to -35 °C

thermo scientific



- Low noise level
- Natural refrigerant
- Audible and visual alarm



- With auto defrost
- Whisper-quiet with a noise level of just 52 dB(A)
- Natural refrigerant (R290)
- Acoustic and visual alarm
- Self-closing door with 90° hinge

Specifications

Temperature range: -35 ... -15 °C
Power supply: 230 V, 50 Hz

Type	Capacity	External dimensions (W x D x H) mm	PK	Cat. No.
TSX 1230 FV	326	619 x 790 x 1854	1	4.671 810
TSX 2330 FV	650	711 x 962 x 1994	1	4.672 628
TSX 3030 FV	827	864 x 962 x 1994	1	6.312 076

Deep freeze labels Cryo-Babies®/Cryo-Tags®

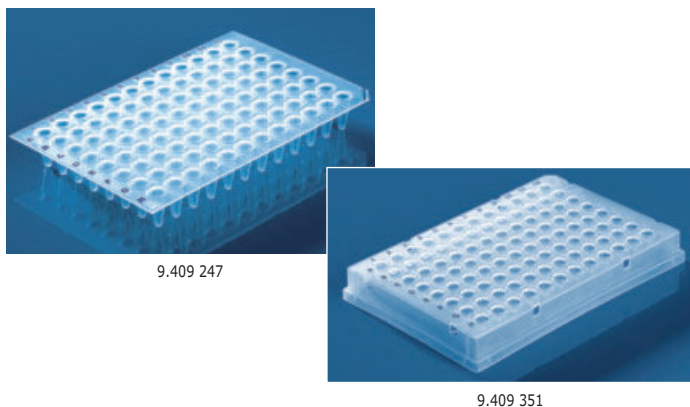


Temperature resistant from -196 °C to 150 °C. All labels withstand freezer temperatures down to -196 °C (liquid and vapour phase nitrogen), boiling water baths, autoclaving and moderate ovens (150 °C). Resist most organic solvents and caustic agents.

Type	Dimensions (W x D) mm	For vessels	PK	Cat. No.
Cryo-Babies®	24 x 13	0.5ml tubes	1000	9.100 030
Cryo-Babies®	33 x 13	1.5/2.0ml tubes	1000	9.100 031
Cryo-Tags®	38 x 13	General application	1000	9.100 032



96 well PCR-Plates, PP, for PCR or qPCR



The ultra-thin-walled PCR plate design facilitates constant, rapid and precise heat transfer. With blue alphanumeric code and cut corner for easy orientation, or as indicated.

96-well, non-skirted

PP. 0.2 ml wells. 96-well non-skirted PCR plates are suitable for most commercially available thermocyclers.

96-well, semi-skirted

PP. 0.2 ml wells. 96-well semi-skirted PCR plates can easily be labelled or tagged with a barcode.

96-well, skirted

PP. 0.2 ml wells. 96-well skirted PCR plates are especially rigid and are optimally suited for use with automatic pipetting systems and for being transported.

Description	Volume ml	Cut corner	PK	Cat. No.
Low Profile, non-skirted	0.15	H12	50	9.409 247
Low Profile, semi skirted	0.15	A12	50	9.409 256
Low Profile, fully skirted*	0.15	H1	50	9.409 351
Standard profile, non-skirted	0.20	A12	50	9.409 254
Standard profile, semi skirted	0.20	A12	50	9.409 264
Standard profile, non-skirted, elevated rim	0.20	H12	50	9.409 381

*Black alphanumeric code, no additional markings on the cut corner.

Single PCR tubes with attached caps, PP



0.2 ml and 0.5 ml PCR tubes with attached caps are compatible with leading thermocyclers with heated lids.

Capacity	Description	Colour	PK	Cat. No.
ml				
0.2	domed cap	clear	1000	9.409 370
0.2	flat cap	clear	1000	9.409 371
0.5	flat cap	clear	1000	9.409 372

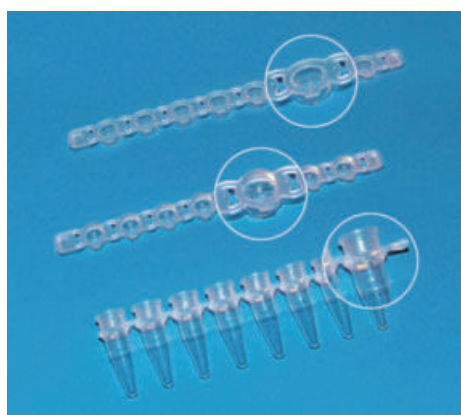
Sealing Films, Self-adhesive, Polyester



In case the microplates, PCR-plates, and deep well plates need to be not only covered but also securely sealed, self-adhesive sealing films are the ideal solution.

Description	Application	PK	Cat. No.
single film	ELISA, PCR	100	9.409 386
single film, highly transparent	ELISA, Real Time PCR	100	4.000 237

Strips of 8-/12- PCR tubes plus detached cap strips, PP



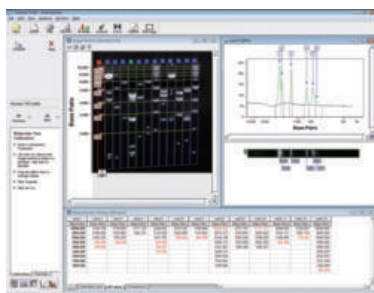
The lids of the 8-strip strips can be opened and closed easily without tools. The vessels have a retaining tab at one end, and the lid strips have a small tab on the side of each lid for careful, contamination-free opening. Made of high-quality polypropylene, RNase-, DNase-, and DNA-free.

Capacity	Description	Colour	PK	Cat. No.
ml				
0.2	Strips of 8 PCR tubes, without caps	clear	125	9.409 374
0.2	Strips of 8 PCR tubes, with separate flat caps	clear	250	4.007 894
0.2	Strips of 8 PCR tubes, with separate domed caps	clear	250	4.007 895

Gel documentation system microDOC with UV-Transilluminator



- Powerful camera
- Compact device



Recently upgraded with a new 24.1 megapixel digital CMOS camera to guarantee superb resolution, the microDOC is the researcher's choice for a simple, ultra-compact gel documentation system that meets constraints in both budget and space within the laboratory. A large 8" TFT screen enables images, including agarose and fluorescent gels, colorimetric gels, autoradiography film and blotting membrane, to be captured clearly and easily. The system is computer-free and supplied with an 8 GB storage card and 58 mm ethidium bromide filter as standard. Files are saved onto the storage card in RAW, TIFF-RGB and JPEG formats.

microDOC BASIC: The microDOC BASIC is a simple, low-cost system comprising a lift-off dark room hood and 24.1 megapixel digital camera, through which the gel is viewed directly.

TotalLab™ 1D software: Its main functions include: lane creation, background subtraction, band detection, profile deconvolution, and molecular size, pI and quantity calibration. More sophisticated standalone software options are available for 1D applications that require band matching, array, colony counting and image ToolBox functionalities.

Camera:

- File Format Design rule for Camera File system, DPOF (version 1.1) compliant
- Focus-Area Selection AF mode and manual focus are available
- Hood
- Safety Door Switch Automatically disconnects UV transilluminator, while opening the chamber door during operation

Specifications Camera

Effective Pixels:	24.1 megapixels
Type:	TTL-CT-SIR with CMOS sensor
Lens:	Canon EF/EF-S 18-55 mm
Maximum Aperture:	f/2.8 - f/5.6
Image Resolution:	720 × 480 up to 5.184 × 3.456
Data Type Still images:	Exif 2.3 (JPEG), RAW (CR2)
Movies:	MOV (Image data: H264; Audio data: Linear PCM (stereo))
Filter:	Ethidium Bromide or SYBR Green (58 mm)
Inner White Light:	2 x 3 W white light LED (excl. MDOC Basic Models)
Monitor:	8" TFT liquid crystal screen
Display Format:	960 x 234 mm
Luminance:	300 cd/m ²
Display Mode:	NTSC/PAL mode switchable
Dimensions with camera (W x D x H):	290 x 325 x 515 mm
Rated Voltages:	110 - 220 V
Weight approx.:	7.7 kg

Description	PK	Cat. No.
Compact Gel documentation system* * incl. Analysis Software TotalLab1D.	1	9.584 759

LLG-Agarose Standard



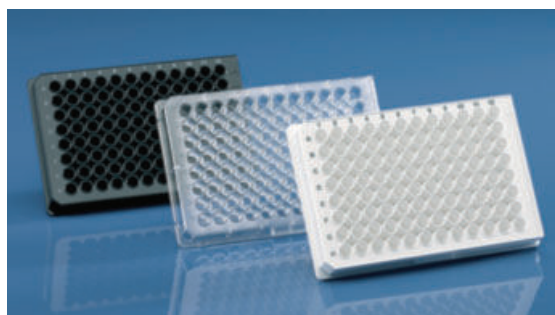
High transparency and low background of the agarose gel ensure clear and sharply defined bands.

- Very good dissolution and rapid gel formation
- High gel strength even at low agarose concentrations
- Suitable for agarose concentrations from 0.75 up to 2%
- Good separation efficiency for nucleic acid fragments between 250 bp and 23 kb
- Free of DNase and RNase

Appearance:	White powder
Clarity (NTU):	≤4 (1.5% gel)
Gelling point:	36 ± 1.5 °C (1.5% gel)
Melting point:	88 ± 1.5 °C (1.5% gel)
Gel strength:	≥1000 g/cm ² (1% gel)
Sulphate:	≤0.15%

Capacity	PK	Cat. No.
g		
100	1	4.681 511
500	1	4.681 512

Microtitre plate BRANDplates®, 96-well, pureGrade™, Medium Binding



Non-treated surface. The standard plate for most applications. Particularly applicable for homogenous assays, screening, and in the field of storage.

- Non-sterile
- Grey or embossed alphanumeric coding
- ANSI/SLAS format

The scope of supply includes 1 lid per pack.

Description	Bottom shape/ Well volume µl	PK	Cat. No.
96-well, transparent	U / 330	100	4.000 238
96-well, transparent	V / 360	100	6.233 851
96-well, transparent	F / 350	100	6.231 785
96-well, transparent	C / 350	100	4.000 239
96-well, white	U / 330	100	4.000 240
96-well, white	F / 350	100	6.233 548
96-well, black	U / 330	100	4.000 241
96-well, black	F / 350	100	6.233 756

Repetitive pipette HandyStep® touch/HandyStep® touch S



- Intuitive Operation
- Ergonomic
- Automatic Tip Ejection



Repetitive pipette with colour touch display and automatic tip size recognition.

The automatic tip size recognition of the PD-Tips II, with patented coding on the piston, automatically displays the tip size after inserting the tip. By inserting a new PD-tip of the same size, all instrument settings are maintained.

HandyStep® touch with the standard modes Multi-Dispensing, Auto-Dispensing, Pipetting and Favorites
HandyStep® touch S with the additional functions Sequential Dispensing, Multi-Aspiration and Titration

- Touchscreen operation with intuitive menu navigation and integrated help function
- Automatic tip ejection by the press of a button
- Variable volume adjustment from 1.0 µl to 50 ml
- USB-C connection for quick charging by cable
- Inductive charging with optional charging stand
- Compatible third party tips can also be used

Scope of supply: Repetitive pipette, includes universal AC adapter (for Europe, UK, USA, Japan, Australia and New Zealand), Li-Ion battery, USB-Type C cable, shelf/rack mount, sample PD-Tips II, operating manual, performance certificate

Type	Colour	PK	Cat. No.
HandyStep® touch	White	1	9.284 015
HandyStep® touch S	Black	1	9.284 016

Pasteur pipettes, PE



Disposable pipettes with fine tips for precise dispensing.
 Length: 150 mm
 - Graduated

Nominal capacity ml	PK	Cat. No.
1	500	6.206 154
3	500	6.206 772

Dispenser tips, PD-Tips II



The tips are also compatible with all other instruments of the HandyStep® family and with repetitive pipettes from other manufacturers.

- Cylinder: PP/piston: HDPE, 0.1 ml piston: LCP
- Volumes from 0.1 ml to 50 ml
- Comply with the requirements of ISO 8655
- Supplied with batch certificate
- Adapter for sizes 25 ml and 50 ml included
- PD-Tips II cannot be autoclaved; the adapters are autoclavable

Nominal capacity ml	Description	Sterile	PK	Cat. No.
0.10	bulk	-	100	9.280 950
0.50	bulk	-	100	9.280 951
1.00	bulk	-	100	9.280 952
1.25	bulk	-	100	9.280 953
2.50	bulk	-	100	9.280 954
5.00	bulk	-	100	9.280 955
10.00	bulk	-	100	9.280 956
12.50	bulk	-	100	9.280 957
25.00	bulk	-	50	9.280 958
50.00	bulk	-	25	9.280 959

Automatic Burettes, Schilling pattern, borosilicate glass 3.3/ PE



- Precise dosing using the press button
- Exact fine titration with the micro-screw
- With Schellbach stripe
- Resistant to chemicals
- Further parts in contact with the medium: PP, natural rubber
- Graduation according to Category B (Tolerances according to DIN EN ISO 385)
- Blue ring graduations

Capacity ml	Grad. ml	Tolerance ± ml	Height mm	PK	Cat. No.
5	0.05	0.030	610	1	7.300 482
10	0.05	0.045	560	1	6.070 383
15	0.1	0.045	520	1	6.070 634
25	0.1	0.075	650	1	7.200 163
50	0.1	0.075	920	1	6.059 942



Microliter pipettes LLG-proMLP

All LLG-proMLP pipettes are equipped with an adjustable eject button allowing right and left handed users to set the button*according to their preferences.



- High quality **Made in France**
- High accuracy, reliability and reproducibility
- Extremely light weight while the robustness still remains
- Perfect ergonomics for highest comfort
- Colour-coded push-button for quick operation
- Extremely low pipetting forces
- **Built-in volume locking** for error-free results
- Completely autoclavable at 121 °C
- Including individual calibration certificate (according to EN ISO 8655)

*not available for 5 ml and 10 ml pipette

Single channel microliter pipettes



Scope of supply: microliter pipette, calibration tool

Capacity	Increments	Accuracy max. vol. (± R%)	PK	Cat. No.
0.2-2	0.002	1.65	1	6.270 420
0.5-10	0.02	1.10	1	6.270 421
2-20	0.02	1.00	1	6.270 422
10-100	0.2	0.80	1	6.270 423
20-200	0.2	0.80	1	6.270 424
100-1000	2	0.80	1	6.270 425
500-5000	2	0.66	1	6.270 426
1000-10000	20	0.60	1	6.270 427

LLG-Pipette stands for single channel microliter pipettes, PMMA



White, stable plastic (PMMA), industrial grade. Adjustable heights. Suitable for all kinds of pipettes.

Description	PK	Cat. No.
for 4 pipettes	1	9.280 014
for 6 pipettes	1	9.280 011

Multichannel microliter pipettes



- Made in the EU
- Adjustable tip ejector button
- Integrated volume lock

The new LLG-proMLP multichannel microliter pipettes combine high accuracy and reliability with ergonomic and extremely low force pipetting, relieving stress from your hand and thumb. Available volume ranges from 0.5 µl to 300 µl.

Scope of supply: microliter pipette, calibration tool



Capacity	Colour coding	Channels	PK	Cat. No.
0.5 ... 10	red	8	1	4.690 343
2 ... 20	light yellow	8	1	4.690 344
20 ... 200	yellow	8	1	4.690 346
20 ... 300	green	8	1	6.523 142
0.5 ... 10	red	12	1	4.690 347
2 ... 20	light yellow	12	1	4.690 348
20 ... 200	yellow	12	1	4.690 350
20 ... 300	green	12	1	6.523 143

LLG-Labware pipette tips, economy 2.0, PP



- Improved optical clarity and pipette fit
- Colored coded rack inserts for easy identification
- Graduated (5 and 10 ml without graduation, 6.326 975 with graduation)
- Autoclavable
- DNase and RNase free

Capacity	Colour	Package contents	PK	Cat. No.
0.1 ... 10	transparent	10 x 96 tips in rack	960	4.668 776
0.1 ... 10	transparent	10 x 96 tips in rack	960	6.491 406
1 ... 200	transparent	10 x 96 tips in rack	960	4.668 778
1 ... 200	yellow	10 x 96 tips in rack	960	4.668 779
100 ... 1000	transparent	8 x 96 tips in rack	768	4.668 782
100 ... 1000	blue	8 x 96 tips in rack	768	4.668 783
100 ... 5000	clear	1 bag of 250	250	9.409 097
100 ... 5000	clear	1 bag of 250	250	6.326 975
1000 ... 10000	clear	1 bag of 100	100	9.409 098

LLG-Measuring jugs with handle, PP



Made of highly transparent Polypropylen. With easy-to-read blue graduation.

- Autoclavable at 121 °C
- Open handle
- Stackable
- According to ISO 7056

Nominal capacity	Grad.	Ext. diam.	Height	PK	Cat. No.
ml	ml	mm	mm		
250	5	75	115	2	9.013 680
500	10	100	137	2	9.013 681
1000	10	125	167	2	9.013 682
2000	20	148	217	1	9.013 683
3000	25	170	244	1	9.013 684

LLG-Griffin beakers, PP



Transparent. Low form with practical spout and easy-to-read blue graduation.

- Autoclavable at 121 °C
- Good chemical resistance
- Stackable
- According to ISO 7056

Nominal capacity	Grad.	Diam.	Height	PK	Cat. No.
ml	ml	mm	mm		
100	10	50	70	2	9.013 672
250	25	67	93	2	9.013 673
500	50	88	119	2	9.013 674
1000	50	109	147	2	9.013 675
2000	100	133	184	1	9.013 676

Aspirator bottles, series 350, HDPE



Food-grade product according to Regulation (EC) No 10/2011. Natural with printed blue graduations (in L) and a screwed closure. With or without a threaded connection at the base.

Capacity	Ext. diam.	Height	Handle	PK	Cat. No.
Litres	mm	mm			
5	167	330	1	1	9.011 009
10	206	427	1	1	9.011 010
25	278	580	2	1	9.011 025

Height in mm without cap.

Cylindrical jars with ribbed cap, HDPE



The cylindrical jars are supplied with insert and cap. Thanks to the large neck, they are suitable for powders, solid specimen, creamy or semisolid substances, crystals and hygroscopic substances. Suitable for foodstuff according to EC Regulation 1935/2004 and EC Regulation 10/2011.

Nominal capacity	Ext. diam.	Neck i. d.	Height	PK	Cat. No.
ml	mm	mm	mm		
70	50	36	60	10	4.672 397
120	56	36	71	10	4.672 394
250	69	50	94	10	4.672 395
500	86	70	107	10	4.672 396
1000	111	85	128	10	4.672 393
1500	111	87	182	10	9.073 444
2000	111	87	235	10	9.073 446

Vial disposer Arnold/Marco, PP



Arnold

Marco

For the safe and quick disposal of HPLC vials. Thanks to the safety funnel with an extra-large neck diameter, your vials fall easily through the opening without jamming or clogging the opening. The hinged lid safely holds back solvent vapors and other contaminants.

- For the disposal of large quantities of sample vials
- Connection for optional activated carbon filter available
- Low overall height, also suitable for safety storage cabinets (Marco)

Scope of supply: 10 l canister, safety funnel

Type	Dimensions (W x D x H) mm	Funnel diam. mm	PK	Cat. No.
Arnold	195 x 195 x 380	185	1	6.328 027
Marco	195 x 195 x 380	140	1	6.328 028

LLG-Autoclavable bags, PP



Constructed from very strong PP film with a broad seam at the bottom. For the disposal of contaminated labware. When autoclaving, the neck of the bag must be left open. Film thickness: 50 µm.

Capacity	Width	Length	Package contents	PK	Cat. No.
L	mm	mm			
1.5	200	300	Dispenser box of 100 bags	100	9.404 099
6.0	300	500	Box of 500 bags	500	9.404 220
22.0	400	780	Box of 250 bags	250	9.404 221
25.0	500	780	Box of 250 bags	250	9.404 222
32.0	600	800	Box of 250 bags	250	9.404 223
32.0	600	780	Box of 100 bags	100	9.404 103
72.0	700	1100	Box of 250 bags	250	9.404 224
72.0	700	1100	Box of 75 bags	75	9.404 105

Needles and waste containers Medibox®



6.321 707

6.321 708

6.321 709

- Break-resistant, puncture-resistant and stable when used as intended in accordance with the specifications of DIN EN ISO 23907
- Can be temporarily closed with one hand
- Can be permanently sealed
- Marking of maximum fill level on the lid or directly on the box
- Autoclavable at 134° for up to 18 minutes (does not apply to the Medibox® 0.8 litre)
- Certified according to: DIN EN ISO 23907; Directive 2008/68/EC and ADR-UN approval: UN 3291
- Meets the requirements for waste containers according to TRBA 250

Volume litres	Filling volume L	Dimensions (W x D x H) mm	PK	Cat. No.
0.8	0.67	98 x 98 x 180	9	6.321 710
2.4	2.0	151 x 151 x 200	9	6.321 707
4.7	3.9	190 x 190 x 200	5	6.321 708
5.7	4.8	190 x 190 x 257	5	6.321 709

LLG-Absorbent, oil and chemical binder, granules



Universal chemical and oil binder for all liquids, also for solvents. Very high absorption capacity (up to 1:75 of aqueous solutions). Almost dust-free granules with colour indicator: colour changes to yellow in contact with acids, to red in contact with alkalis. Disposal according to the pollutant recorded.

Capacity	Package	PK	Cat. No.
kg			
1.5	Square handle bottle	1	6.283 037
5.0	Bucket	1	6.270 479

LLG-Safety Eyeshields *lady*



- CE approved to EN 166 and EN 170
- Panoramic wrapping lens
- 180° visual field
- Nosepad and terminal tips made from soft, moldable material for optimal comfort and individual customisation
- 100% UV protection (up to 400 nm)
- Weight only 25 g

Colour	Lens	PK	Cat. No.
white/green	clear, AF+, AS+, 2C-1.2 U 1 FT KN CE	1	9.006 007
white/pink	clear, AF+, AS+, 2C-1.2 U 1 FT KN CE	1	9.006 008
black/green	clear, AF, AS, 2C-1.2 U 1 FT CE	1	9.006 009

Disposable Gloves Kimtech™ Purple Nitrile™

EN ISO 374-1 Type B EN ISO 374-5 EN 420



Offering the highest protection of all Kimtech™ gloves, Purple Nitrile™ gloves are latex-, silicone- and powder-free.

- Contains no natural rubber latex
- Textured fingertip, enhances wet and dry grip
- Virus Protection
- AQL 0.65
- **Cat. III Low Chemical resistant**

According to EN ISO 374-1:2016/Type B, EN ISO 374-5:2016, EN 420, Suitable for food handling.

Size	Length	PK	Cat. No.
	mm		
XS (5 to 6)	240	100	9.005 420
S (6 to 7)	240	100	9.005 421
M (7 to 8)	240	100	9.005 422
L (8 to 9)	250	100	9.005 423
XL (9 to 10)	250	90	9.005 424

Hand-Held Drench Hoses



Two sprays in one. The hose can be used as a fixed eyewash when fitted into the mount. The hose can also be removed from the mount so that other body parts and reclining patients can be treated.

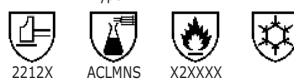
- Wall-/ table mount included
- according to DIN 1988 und DIN EN 1717
- according to DIN EN 15154-2:2006 and ANSI Z358.1-2014
- DIN-DVGW tested and certificated
- DIN certification label included

Spray height: 250mm
 Hose length: 1500mm
 Connection: 1/2" swivel nut
 Water output: 7 litres/min per spray head, regulated
 Inlet fitting: M 28 x 80 mm

Description	Connection	PK	Cat. No.
1 spray head, 45° angle	1/2" female	1	9.733 778
2 spray heads, 45° angle	1/2" female	1	9.733 779
1 spray head, vertical	1/2" female	1	9.733 786

Thermal protection gloves TempTec 332, neoprene

EN 388 EN ISO 374-1 Type A EN 407 EN 511



- Thermal insulation due to double-knit cotton
- Good grip due to pebbled palms
- Chemical resistance to acids and aliphatic solvents
- 1 pair per pack

Length: 355 mm
 Colour: black/blue
 CE: **Cat. III**

Size	PK	Cat. No.
8	1	6.269 287
9	1	6.281 320
10	1	6.316 498

Precision wipes, KIMTECH SCIENCE, 1-ply



Precision tissue wipes for critical cleaning in the electronic, optic and precision mechanics industries, lint-free, highly absorbent and strong, even when wet. 1-ply, white. Anti-static.

Dimensions	Package contents	PK	Cat. No.
mm			
304 x 304	Box of 196 wipes	1	9.413 020
115 x 215	Box of 280 wipes	1	9.413 021

Wipes, WypAll*L20/L30



Perforated, blue Airflex* material. Bulky wipes with excellent absorption capacity and wet strength. For cleaning-up large spillages and suitable for most surfaces.

L20: AIRFLEX*, 2-ply
L30: AIRFLEX*, 3-ply

Type	Width	Package contents	Colour	PK	Cat. No.
	mm				
L20	330	1 roll x 500 wipes	blue	1	9.413 044
L20	185	6 rolls x 300 wipes	white	6	9.413 091
L30	370	1 roll x 670 wipes	blue	1	9.413 046

LLG-Hand towels, 3-ply



Bright white, extra absorbent, completely unfolding, matching most dispenser systems, economical use due to high absorbency and comfortable size. Suitable for LLG-Dispenser for hand towels, Cat. No. 7.618 375.

Width	Length	Package contents	PK	Cat. No.
mm	mm			
220	420	20 Packs with 100 tissues	20	6.266 568

Brushes, Set

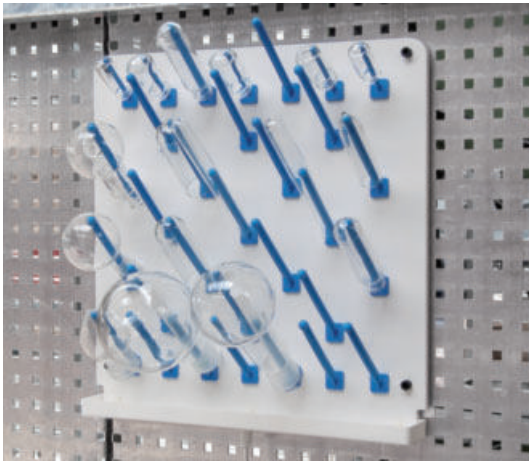


Set consisting of:

- Pipette brush Ø 5 mm, L 500 mm (9.019 010)
- Reagent bottle brush with wool tip Ø 10 mm, L 190 mm (9.019 020)
- Reagent bottle brush with wool tip Ø 30 mm, L 270 mm (9.019 040)
- Reagent bottle brush with head bundle Ø 10 mm, L 250 (9.019 030)
- Bottle brush with head bundle Ø 50 mm, L 330 mm (9.019 050)
- Bottle brush with head bundle Ø 60 mm, L 470 mm (9.019 060)
- Beaker brush Ø 85 mm, L 390 mm (9.019 070)
- Beaker brush Ø 85 mm, L 430 mm (9.019 080)
- Beaker brush Ø 100 mm, L 430 mm (9.019 090)
- Beaker brush Ø 100 mm, L 630 mm (9.019 092)

Type	PK	Cat. No.
Set	1	9.019 002

Draining rack LaboPlast®, PVC



The stable rods are individually placed into the holes of the draining rack and are clicked into place. Their positions can be changed at any time.

Scope of supply draining rack with drain channel: Draining rack incl. wall mounting set (screws, dowels), removable drain channel incl. drainage connection and drain tube

Width	Height	PK	Cat. No.
mm	mm		
400	400	1	9.003 374
500	500	1	9.003 375
600	600	1	9.003 376

LLG-Trolleys, Stainless Steel



Made of CNS 18/10, material no. 1.4301. All shelves are produced with an all-around raised profile edge. This prevents anything from slipping over the edge. The load capacity per shelf is 80 kg. Wall bumpers made of plastic (polyamide) on all four corners protect against damage.

Description	Width	Depth	Height	PK	Cat. No.
	mm	mm	mm		
2 shelves, vertical spacing 585mm	900	600	950	1	9.148 101

Wiper Bowl® Polytex®



The cleaning cloths are packed in the practical Wiper Bowl® dispenser bucket. This means that the moist cleaning substances remain effective for a particularly long time and the wipes do not dry out.

- consisting of 100% extremely robust and low-lint polypropylene
- for removing oils, grease, adhesives, paints etc, adhesives, colours etc. and stubborn soiling

Attention:
Minimum order quantity = 6 buckets !



Description	PK	Cat. No.
1 bucket with 72 tissues at 25 x 25 cm	1	7.673 365

Spirit burner, 18/10 steel



With a wick height adjuster and a sealing cap. Capacity approx. 60ml.

Type	PK	Cat. No.
Spirit burner	1	9.018 560

LLG-Laboratory Power Failure Detector




- Immediate visual and acoustic alarm
- Alarm can sound for short power outages, or for larger periods of at least 12 hours (can be switched off manually).
- Plug safety cover offers protection against accidental disconnection of plug
- Maximum total power of connected devices 3500 W power supply 230 V 50 Hz
- Suitable for European plugs
- Max. Rating 16 A
- With built-in battery

Scope of supply:
1 x power failure detector
2 x plug safety caps
2 x screws



Type	PK	Cat. No.
LLG-Laboratory Power Failure Detector	1	6.255 819

Safety Bunsen Burner, schuett phoenix II

 Ideal for safety cabinets

schuettbiotec.de



For sterilising, heating, flame sterilising. For use in every microbiological laboratory or in safety cabinets.

schuett phoenix II eco: (with LED control lamp and foot-switch), Start flame by foot-switch or button (On/Off). Best suited for use in microbiological safety cabinets. Best price-to-performance ratio.

schuett phoenix II standard: (brilliant colour display, selection of native language, sensor and foot-switch) Start/Stop flame by activating sensor 1x or 2x, use foot switch or press button by hand. Continuous display of timer.

schuett phoenix II accu: (brilliant colour display, selection of native language, sensor and built-in extra heavy duty power cells) Start/stop flame by activating sensor 1x or 2x, use foot-switch or press button by hand. Continuous display of timer and battery power. Operates for up to 30 hours, intermittent use. Complete with battery charger for 3-hour recharging. Ideal for mobile usage.

Power supply: 100 - 240 V, 50/60 Hz

Type	PK	Cat. No.
schuett phoenix II eco*	1	9.018 760
schuett phoenix II standard*	1	9.018 761
schuett phoenix II accu	1	9.018 762

*incl. foot switch, stainless steel

Inoculation loops and loop stands

schuettbiotec.de



Inoculation loops made from stainless steel, special stainless steel wire or platinum-iridium wire (90/10). It can be heated to red heat. Length: 60 mm. Wire diameter: 0.5 mm.

Inoculation loop stand robust and sturdy made of plastic (autoclavable). Accommodates up to 6 inoculation loop holders at any one time.

Type	Description	Loop diam. mm	PK	Cat. No.
P-I 1	Platinum-iridium	1	1	9.520 180
P-I 2	Platinum-iridium	2	1	9.520 181
P-I 3	Platinum-iridium	3	1	9.520 182
P-I 5	Platinum-iridium	5	1	9.520 184
W-1.5	Stainless steel	1.5	10	9.520 185
W-2.5	Stainless steel	2.5	10	9.520 186
W-4.0	Stainless steel	4.0	10	6.233 696
Inoculation loop stand R (round)	(Diam. x H) 80 x 50 mm		1	9.520 190
Inoculation loop stand L (long)	(L x W x H) 180 x 50 x 50 mm		1	9.520 191

Petri dish turntables, schuett petrurn

schuettbiotec.de



9.520 201

9.520 200

For uniform inoculation of petri dishes. Easy-to-use. Made in Germany.

schuett petrurn-M

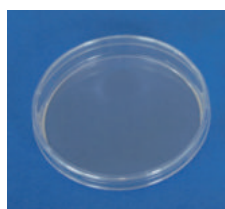
With manually operated. Petri dish (90 mm or 150 mm diameter).

schuett petrurn-E

Electrically driven (100 - 240 V, 50/60 Hz). Easy operation of the rotary table, contact-free start via IR sensor (adjustable rotation time from 3 to 120 sec.), in continuous operation or optionally in foot switch mode. Infinitely adjustable speed from 10 to 120 rpm. For Petri dishes up to Ø 100 mm (Ø 150 mm optional). Compact housing made of stainless steel.

Type	Dimensions mm	PK	Cat. No.
schuett petrurn-M, manually driven	(Dia. x H) 160 x 45	1	9.520 201
schuett petrurn-E, electrically driven	(Dia. x H) 160 x 70	1	9.520 200
Foot pedal for schuett petrurn-E		1	9.520 203
Turntable adapter for Petri dishes up to 150mm diameter		1	9.520 204

LLG-Petri dishes, PS



Made in the EU

Produced under aseptic conditions in an ISO 6 cleanroom. Contact plate with counting grid.

- Stable thickness to prevent any deformations while using
- Stackable
- With or without vents
- Aseptic (90 mm diam.) or beta irradiated sterile versions (all sizes)
- Packed in sleeves á 10 dishes or 20 dishes (90 mm diam. dishes)

Ext. diam. mm	Description	Height approx. mm	PK	Cat. No.
60	with triple vents, aseptic	14	1080	6.323 696
60	without vents, aseptic	14	1080	6.323 697
90	with triple vents, aseptic	16	480	6.285 823
90	without vents, aseptic	16	480	6.285 824
60	with triple vents, sterile	14	1080	4.678 371
60	without vents, sterile	14	1080	4.678 372
90	with triple vents, sterile	16	480	6.285 816
90	without vents, sterile	16	480	6.285 817
150	with triple vents, sterile	19	140	4.680 144

Mini centrifuge LLG-uniCFUGE 2



Compact and reasonably priced mini centrifuges with two rotor types. Speed can be adjusted to 4000 rpm or 6000 rpm. Powerful motor for fast starting. Quick stop when the lid is opened.

LLG-uniCFUGE 2 with **Universal rotor** for 6 x 1.5/2.0 ml and 6 x 0.5 ml tubes and 2 times 8 x 0.2 ml PCR-strips.

Scope of supply: Centrifuge, mains cable

Specifications

Max. RCF:	1200 x g and 2000 x g
Max. speed:	4000 rpm and 6000 rpm
Motor:	brushless DC motor
Max. load:	6 x 0.5/1.5/2 ml and 2 x 8-tube PCR strips (0.2 ml)
Dimensions (diam. x H):	140 x 120 mm
Power supply:	100 ... 240 V, 50/60 Hz
Warranty:	3 years

Description	Plug type	PK	Cat. No.
LLG-uniCFUGE 2 with universal rotor	EU	1	6.263 510

Safe-lock reaction tubes, PP



- A small clasp on the patented cap locking device clips onto the rim of the tube
- Autoclavable when open (121 °C, 20 min.)
- With frosted labelling area.
- Excellent mechanical stability for centrifugation
- Graduated

Capacity	Colour	PK	Cat. No.
0.5	Transparent	500	9.409 320
1.5	Transparent	1000	9.409 331
2.0	Transparent	1000	9.409 341
0.5	Assorted colours	500	9.409 357
1.5	Assorted colours	1000	9.409 358
2.0	Assorted colours	1000	9.409 359

Centrifuge Frontier™ Multi FC5707



Including rotor for 15 ml and 50 ml tubes



Compact multifunctional centrifuge for general laboratory applications, with splash-proof control panel and touch-wheel control.

- Backlit, two-lined LCD display
- Quiet brushless motor
- 10 acceleration and deceleration rates
- Fast spin for small measurement runs
- Timer 10 s to 99 h 59 min 59 s
- Memory for up to 99 programmes
- Lid locking system
- Imbalance sensor
- Angle rotor for 4 x 50 ml or 4 x 15 ml tubes

Scope of supply: Centrifuge, 4 x 50/15 ml angle rotor

Specifications

Max. rcf:	4445 x g
Speed:	200 ... 6800 rpm
Permitted ambient temperature:	2 ... 35 °C
Dimensions (WxDxH):	277 x 356 x 236 mm
Power supply:	230 V, 50/60 Hz
Weight:	10 kg

Type	PK	Cat. No.
FC5707+R09	1	6.492 207

Eppendorf Tubes® BioBased, PP, with screw cap, HDPE



Eppendorf Tubes® BioBased are made of 90% bio-based plastic. For cell culture and cell biology applications, as well as for sample preparation in microbiology and molecular biology laboratories.

- Sterile
- Pyrogen-, DNase-, RNase- and DNA-free
- Lid with grooved sides
- Conical with screw cap
- Large labeling field
- ISCC PLUS and ACT certification

Nom. capacity	Max. rcf	Package	PK	Cat. No.
L	x g			
5	2500	2 bags of 100	200	4.687 109
15	19500	10 bags of 50	500	4.687 110
25	17000	8 bags of 25	200	4.687 111
50	19500	20 bags of 25	500	4.687 112

Ultrapure water system arium® mini plus extend/mini plus extend UV



- For type 1 and type 3 water
- Removable dosing unit
- Compact



arium® mini plus extend

A combined ultrapure water system was developed to provide ASTM type 1 and type 3 water. arium® mini is the first ultrapure water system with integrated bag tank technology. The 5-litre bags are made of multilayer and specialised film, conforming to biocompatibility standards. The pure water can be stored in the side integrated 5-litre bag until the production of type 1 pure water.

The arium® mini extend versions have a removable dispenser with magnetic holder for ergonomic and splash-free filling. The combination of the dispenser with the ultrapure water system enables a small footprint. Can be combined with Sterile Plus final filter or Cell Plus filter.

Type	PK	Cat. No.
arium® mini plus extend	1	6.493 291
arium® mini plus extend UV	1	6.493 292

Accessories for Ultra Pure Water System arium® mini plus

Type	PK	Cat. No.
Sterile filter	1	6.288 218
Pre-treatment cartridge	1	7.647 749
Scientific kit ultrapure cartridge	1	7.647 755
5-litre bag	1	7.647 756

Laboratory bottles, DURAN®, with retrace code, with screw cap



With blue PP screw cap and pouring ring. ISO 4796-1 compliant. Thread acc. to DIN 168-1 and approximate graduations.

Capacity	Diam.	Height with cap	Neck thread	PK	Cat. No.
ml	mm	mm	GL		
1000	101	230	45	10	4.679 010
2000	136	265	45	1	9.072 007
3500	160	295	45	1	9.071 682
5000	182	335	45	1	9.072 008
10000	227	415	45	1	9.072 004
15000	268	450	45	1	7.076 312
20000	288	510	45	1	9.072 009

Distilled water



Deionized and UV irradiated. Acc to DIN 43530/EN 385. In plastic canister.

Specifications

- pH value: <7.0
- Conductivity: <5 µS/cm
- Hardness: <0.02 mmol/l
- Chlorine content: <2 mg/l

Capacity	PK	Cat. No.
L		
10.0	1	6.273 852
20.0	1	6.280 900
60.0	1	6.289 280

Overhead stirrer EUROSTAR 20 digital



Overhead stirrer designed for simple stirring tasks for quantities up to 15 l (H₂O). Continuous comparison of shaft speed to desired speed is maintained, and variations are adjusted automatically. This guarantees a constant speed even with changes in viscosities of the sample.

- Digital speed display
- Infinitely adjustable speed
- Push-through agitator shafts
- Overload protection
- Short-term overload operation



Specifications

Stirring quantity max. (H ₂ O):	15 l
Max. viscosity:	10000 mPas
Motor rating input/output:	70/42 W
Speed range:	0/30 to 2000 rpm
Max. torque at stirring shaft:	20 Ncm
Display:	LED
Chuck range:	0.5 to 10 mm
Dimensions (W x D x H):	86 x 208 x 248 mm
Weight:	4.4 kg
Protection class DIN EN 60529:	IP 42
Power supply:	230 V, 50/60 Hz

Type	Connector	PK	Cat. No.
EUROSTAR 20 digital	EU	1	9.816 691
EUROSTAR 20 digital	UK	1	9.816 692
EUROSTAR 20 digital	CH	1	9.816 693

Crescent-shaped stirring rotors, PTFE

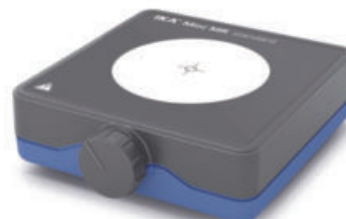


The semi-circular shape of the paddle is ideal for mixing in round-bottom flasks. The pivoting blade allows insertion into vessels with narrow necks and/or ground joints. The stirrer shafts consist of a PTFE-jacketed, stainless steel shaft and a stirrer paddle made of solid PTFE.

Operating temperature: -200 °C to +250 °C

Ø agitator	Ø agitator shaft	To fit chuck diam.	PK	Cat. No.
mm	mm	mm		
65	8	6.5	1	9.197 121
90	8	6.5	1	9.197 122
90	10	8.0	1	9.197 127
90	10	8.0	1	9.197 124

Magnetic stirrer Mini MR standard



- For stirring quantities up to 1 L (H₂O).
- Infinitely variable speed from 0 to 2500 rpm
- White top plate suitable for observing colour reactions
- Power supply with adapter for EU/CH/UK/USA

Specifications

Max. stirring volume, (H ₂ O):	1 l
Speed range:	0 ... 2500 rpm
Permissible ambient temperature:	5 ... 40 °C
Permissible relative moisture:	80%
Plate material:	Polyester film
Top plate dimensions (W x D):	115 x 115 mm
Overall dimensions (W x D x H):	115 x 129 x 37 mm
Supply requirements:	100 ... 240 V, 50/60 Hz
Protection to DIN EN 60529:	IP42

Type	Plug type	PK	Cat. No.
Mini MR standard	EU/CH/UK/USA	1	9.720 211

Propeller, 3 blades, PTFE



The blades are inclined at 45°. Recommended for medium to high speed operations.

The stirrer shafts consist of a PTFE-jacketed, stainless steel shaft and a stirrer paddle made of solid PTFE. High chemical resistance makes it almost universally suitable.

Operating temperature: -200 °C to +250 °C

Ø agitator	Ø agitator shaft	To fit chuck diam.	PK	Cat. No.
mm	mm	mm		
50	6	4.0	1	9.197 138
75	8	6.5	1	9.197 130
75	10	8.0	1	9.197 140

Eppendorf ThermoMixer™ FP/F0.5/F1.5/F2.0



Inclusive block

eppendorf



The devices combine precise heating and mixing with the highest stability, even at maximum mixing frequency. Mixing and incubation steps can be performed independently.

- For 24 reaction vessels or one microplate/deepwell plate
- Simple and intuitive operation using predefined temperature keys (37 °C, 42 °C, 56 °C and 95 °C)
- Improved temperature homogeneity with the new ThermoTop

Specifications

Temperature operation range:
Temperature adjustable range:
Accuracy/Resolution:
Max. heating time:

Shaking frequency ThermoMixer™
F1.5/F2.0:
Shaking frequency ThermoMixer™
FP/F0.5:
Orbit:
Weight:
Electrical heating power:
Power supply:

FP // F0.5 // F1.5 // F2.0

Min. 4 °C above RT, max. 100 °C
1 °C/100 °C
±0.5 °C at 20 ... 45 °C
18 °C/min // 15 °C/min //
11 °C/min // 13 °C/min

300 to 1500 rpm

300 to 2000 rpm

3 mm

6.1 kg // 6.2 kg // 6.3 kg // 6.3 kg

200 W

220-240 V, 50/60 Hz

Type	Dimensions (W x D x H) mm	PK	Cat. No.
ThermoMixer™ FP	206 x 304 x 164	1	9.776 905
ThermoMixer™ F0.5	206 x 304 x 163	1	9.776 936
ThermoMixer™ F1.5	206 x 304 x 170	1	9.776 904
ThermoMixer™ F2.0	206 x 304 x 170	1	9.776 937

Roller mixer CTR-6



- For CO₂ incubators
- With remote control

grant



This roller mixer is specifically designed for use in harsh environments such as high CO₂ and humidity and provides reproducible results for cell culture growth. Removable rollers make the unit flexible and allow for performing various procedures and techniques with various cultivation vessels.

- With remote control to protect the electronics from the CO₂ environment of the incubator
- With stepper motor, guaranteed service life up to 10000 h
- Timer from 1 min to 96 h, continuous
- Stackable with optional stacking kits (up to 3 devices)

Type	Movement type	PK	Cat. No.
CTR-6	rotating/wobbling	1	6.523 372

Stacking kits for roller mixer CTR-6

Type	Description	PK	Cat. No.
CTR SK2	For 2 devices	1	6.523 373
CTR SK3	For 3 devices	1	6.523 374

Centrifuge/Vortexer MSC-2P



- 2 functions in one device
- For PCR plates

grant



MSC-2P is a compact, benchtop digital centrifuge and vortex mixer for unskirted or semi-skirted PCR plates. The combination of centrifugation and mixing functionality ensures fast operation and repeatable results. Suitable for high sample throughput and particularly small volumes. With 4 independent modes for centrifugation, vortexing (up to 5 min), combined centrifugation/vortexing motion and the spin-mix-spin algorithm (up to 10 cycles), which reduces errors during sample preparation.

Scope of supply: Centrifuge, rotor for 2 PCR plates

Type	Movement type	PK	Cat. No.
MSC-2P	circling	1	4.708 897

Spectrophotometers

XD 7000 VIS and XD 7500 UV-VIS



XD 7000 VIS

UV-VIS and VIS spectrophotometers with dual beam optics. The instruments benefit from a barcode test recognition system, over 150 pre-programmed analytical methods and automatic cuvette detection. Further functions of the spectrophotometers include measurement of transmission and absorbance, scanning of spectra, kinetics analysis and creation of user-defined methods.

- Premium optical system with reference beam
- Automatic test recognition with internal barcode reader
- Supports round cuvettes with 13, 16, 24 mm and rectangular cuvettes with 10, 20, 50 mm
- Automatic cuvette type detection
- More than 150 analytical methods implemented
- 7" colour display and keypad
- Ethernet, USB
- 20 user profiles possible
- Up to 1000 user programmes
- Creation of up to 100 further user-defined methods
- Password protection possible

Specifications

Optical System:	XD 7000 VIS // XD 7500 UV-VIS grid monochromator with reference beam
Wavelength range:	320 - 1100 nm // 190 - 1100 nm
Bandwidth:	4 nm
Wavelength accuracy:	±1 nm on all Holmium peaks
Wavelength repeatability:	better than 0.5 nm
Photometric range:	-3.3 to +3.3 Abs
Photometrical resolution/Transmission:	0.001 Abs/0.1% 0.003 Abs below 0.6 Abs
Internal Storage:	40 MB for approx. 5000 data sets
Lamps:	Tungsten-halogen-lamp // Xenon flash lamp
Dimension (W x D x H):	422 x 323 x 195 mm
Weight:	approx. 4.5 kg
Power supply:	100 - 240 V, 50/60 Hz
Protection class:	IP 30

Type	PK	Cat. No.
XD 7000 VIS	1	6.272 436
XD 7500 UV-VIS	1	6.272 437

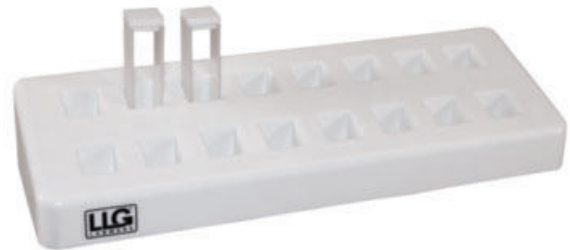
Disposable cuvettes



Disposable cuvettes for spectroscopy, in optical-quality PS and UV grade PMMA with optical windows for optimum transmittance when using wavelengths from 340 nm to 800 nm (PS) and from 280 nm to 800 nm (PMMA). The range ±1% absorption, this is the vital when batch analysis is being undertaken.

Description	Capacity	Material	PK	Cat. No.
	ml			
Standard cuvettes	4.5	PS	100	9.406 431
Semi-micro cuvettes, low form	1.5	PS	100	9.406 432
Semi-micro cuvettes, high form	2.5	PS	100	9.406 433
Standard cuvettes, 4 clear faces	4.5	PS	100	9.406 434
Standard cuvettes	4.5	PMMA	100	9.406 435
Semi-micro cuvettes, high form	2.5	PMMA	100	9.406 436
Semi-micro cuvettes, low form	1.5	PMMA	100	9.406 437
Standard cuvettes, 4 clear faces	4.5	PMMA	100	9.406 438

LLG-Cuvette rack, PP



Ideal for storing up to 16 cuvettes with 12.5 mm width. Two-tier arrangement of the cuvette rows ensures clarity.

- Numbered positions
- Autoclavable at 121 °C

Length	Width	Height	PK	Cat. No.
mm	mm	mm		
210	70	35	1	4.682 061

Cold Light Source KL 1600 LED Package



- ! - Suitable for photo documentation
- Very long service life



- Powerful illumination system with a brightness of 680 lm
- Ripple free illumination for digital imaging applications
- Colour temperature of 5.600 K does not change when the light source is dimmed

Scope of supply:

LED Cold light source KL 1600 LED incl. 2-armed gooseneck light guide, 2 focus lenses, according power cord

Specifications

Colour temperature:	5600 K
Light flux:	680 lm
Dimensions KL 1600 LED (W x D x H):	114 x 231 x 137 mm
Dimensions light guide (Ø x L):	4.5 x 600 mm
Weight:	3.9 kg
Power supply:	100 ... 240 V, 50/60 Hz

Type	Plug type	PK	Cat. No.
KL 1600 LED Package	EU	1	4.666 289

Square cover slips



Made of D263 M borosilicate glass. Accurate cutting free of flaws and blisters.

Width	Length	Thickness	PK	Cat. No.
mm	mm	mm		
15	15	0.13-0.16	200	9.161 015
20	20	0.13-0.16	200	9.161 020
22	22	0.13-0.16	200	9.161 022
24	24	0.13-0.16	200	9.161 024
20	20	0.13-0.16	100	9.161 019
22	22	0.13-0.16	100	9.161 023
24	24	0.13-0.16	100	9.161 025

Microscope, RED 100



- ! - Ideal For educational purposes
- Cost-effective

RED 100 Series, the ideal microscope series for pupils and students.

- Widefield eyepiece WF10X/18 mm, with pointer
- Cordless LED illumination 20 mA, 3.5 V, 70 mW with intensity control
- 10 years warranty
- Monocular head, 45° inclined, 360° rotating
- Reversed triple revolving nosepiece
- Achromatic objectives EA 4X, 10X, 40X S
- Coarse and fine focusing system with tension adjustment
- Side gliding stage, movable back and forth
- "one-touch" sample clips
- Built-in 0.65 N.A. condenser and iris diaphragm



Type	Description	PK	Cat. No.
RED 100	Monocular	1	6.285 856

LLG-Hand tally counter



Mechanical hand tally counter with a counting capacity of 9999 for counting, e.g. blood cells, or bacterial colonies.

Description	PK	Cat. No.
LLG handpiece counter	1	6.328 021

Microscope slides



According to ISO 8037/1. Prewashed and polished. Nominal thickness 1 mm. Size 76 x 26 mm. Also available with 20 mm, frosted, writing patch at one end.

Type	Description	Edge finish	PK	Cat. No.
Without frosted end	Extra white	Cut	50	9.161 110
With frosted end	Extra white	Cut	50	9.161 145
Without frosted end	Extra white	Ground 45°	50	9.161 120
With frosted end	Extra white	Ground 45°	50	6.050 042
Without frosted end	Extra white	Ground 90°	50	6.229 386
With frosted end	Extra white	Ground 90°	50	6.050 000

Vacuum Ovens VO

Reliable, convenient and energy-efficient. Separately controllable and directly heated thermoshelves ensure precise temperature control and, thanks to the digital pressure control, the load is dried quickly and gently.

- Safety glass door with armoured glass on the inside and splinter shield on the outside
- Digital pressure control
- Directly heated and individually controllable thermoshelves
- With 2 thermoshelf connections
- Optional: Pump base cabinet and energy-efficient vacuum pump

ControlCOCKPIT with two colour displays

Scope of supply: Vacuum drying oven, 1 aluminium thermoshelf, calibration certificate (for 160 °C at 20 mbar), software AtmoCONTROL

Specifications

Working temperature range:	at least 5 above ambient to +200 °C
Setting temperature range:	20 °C to +200 °C
Setting accuracy:	up to 99.9: 0.1 °C/ from 100: 0.5 °C
Vacuum:	5 to 1100 mbar
Power supply:	230 V, 50/60 Hz



V029

Type	Nom. capacity	Max. shelves	Included shelves	Internal dimensions (W x D x H) mm	External dimensions (W x D x H) mm	Rated capacity kW	Net weight kg	PK	Cat. No.
	L								
V029	29	1	1	385 x 250 x 305	550 x 400 x 607	0.82	55	1	4.663 352
V049	49	2	1	385 x 330 x 385	550 x 480 x 687	2.02	83	1	4.663 353
V0101	101	2	1	545 x 400 x 465	710 x 550 x 767	2.42	110	1	4.663 354

Piston pump LLG-uniVACUUPUMP 1

The **portable** piston pump LLG-uniVACUUPUMP 1 has been developed for **vacuum and pressure applications** in the laboratory. The LLG-uniVACUUPUMP 1 operates oil-free and can also be used as a compressor to a pressure up to 3.3 bar. Not recommended for pumping organic, acidic or basic vapours.



Advantages:

- Cost-effective alternative for water pumps
- Oil-free, suitable for continuous operation
- Suction/pressure connection: hose nozzle DN 6 for hose inner diameter 6 mm

Scope of supply: Pump, incl. 2 hose clamps, EU + UK-plug power cord

Specifications

Pump speed 50/60 Hz at atmospheric pressure:	9.2/11 l/min
Final pressure:	292 mbar
Max. overpressure:	3.3 bar
Max. operating gas temperature:	60 °C
Permissible ambient temperature:	10 ... 40 °C
Suction/pressure connection:	DN 6
Dimensions (W x D x H):	194 x 114 x 191 mm
Weight:	2.0 kg
Power supply:	230 V/50 Hz
IP code:	IP 20
Warranty:	3 years

Type	PK	Cat. No.
LLG-uniVACUUPUMP 1	1	6.263 580

Mini Diaphragm Vacuum Pumps LABOPORT®



For Filtration, SPE, Degassing, Fluid aspiration.

- PTFE-coated diaphragm is ideal for aggressive/corrosive gases and vapours
- Pump head made from PPS (Polyphenylsulfide), valves made from FFPM (Perfluoro rubber)

Specifications

Connectors for tube:	N 816.3 KT.18:	ID6 mm
Permissible media and ambient temperature:		5 to 40 °C
Flow rate:		Up to 1.8 m³/h
Ultimate vacuum:		Up to 20 mbar abs.
IP code:		IP 20

Type	Flow rate l / min.	Max. pressure bar	PK	Cat. No.
N 816.3 KT.18	16	0.5	1	7.620 376

Moisture balances MB23 and MB25



The Moisture Analysers MB-23 and MB-25 provide stable results with 0.1% or 0.05% moisture resolution because of precision weighing technology. They are supplied with either an infra-red or halogen heating system. Applicable for most applications.

- Halogen (MB-25) or infra-red (MB23) technology
- Sample holder included in MB25 but as option in MB23
- Delivered with 50 x 90 mm aluminium sample dishes and protective cover

Specifications

	MB23 // MB25
Capacity:	110 g
Repeatability 3 g/10 g:	0.3%/0.2% // 0.2%/0.05%
Readability:	0.1% or 0.01 g // 0.05% or 0.005 g
Timer:	1 ... 99 min, 30-second increments to 60 min
Temperature range:	50 ... 160 °C
Operating temperature:	5 ... 40 °C
Pan size (diam.):	90 mm
Dimensions (W x D x H):	170 x 130 x 280 mm
Net weight:	2.3 kg
Power supply:	100 - 240 V, 50/60 Hz

Type	PK	Cat. No.
MB23	1	9.947 604
MB25	1	9.947 605

Hanging Scales HDB-N

Convenient for hanging loads.

- Ideal for quick checking in goods receiving and shipping, also suitable for cases
- Data hold function: For easy reading of the weight, the display can be "frozen" in different ways. Either automatically when the weighing value remains unchanged or manually by pressing the Hold key
- Hook (stainless steel), can be hinged
- Batteries included, 2 x 1.5 V AAA, operating time approx. 180 h



Type	Capacity	Readability	Weight	PK	Cat. No.
	kg	g	g		
HDB 5K5N	5	5	200	1	6.231 173

Ioniser AD-1683A



Suitable for all scales



New

The ioniser can be used as a stand-alone unit with all balances from any manufacturer, making it a useful addition to any weighing environment. The positive and negative ions generated by the ioniser neutralise static charges almost immediately. The tungsten electrode needles maintain the ambient ion balance. The integrated IR sensor allows touchless ON/OFF control, making the removal of static charges even more efficient.

- Adjustable discharge time in either timer mode (3 s or 10 s) or manual mode (any time)
- No risk of contamination as the ioniser uses the direct current method and does not require a fan to discharge the ions
- External IR switch (AX-IR-SWITCH) optionally available (For switching the ioniser on and off close to hand.)

Type	PK	Cat. No.
AD-1683A	1	6.524 445
AX-IR-SWITCH	1	6.493 501

Playing card rejects



Standard size for use as disposable sample carriers or spatulas. Pack size: 1 kg, not sorted.

Type	PK	Cat. No.
Unprinted and laminated on both sides	1	6.051 731

Analytical balance ADT



- ! - Internal adjustment
- Touch display

Analytical balance with flexible functionality and touch display for use in the pharmaceutical industry as well as other fields. Data query and remote control of the balance is carried out via computer or CRM/ERP systems using the KERN Communication Protocol.

- Backlit LCD display
- GLP/ISO record keeping
- RS 232 data interface and USB (Device)

Scope of supply: Analytical balance, draught shield



Specifications

Readability:	0.0001 g
Automatic adjustment:	internal
Weighing surface (WxD):	Ø 90 mm
Plug type:	EU/UK/CH/US/AUS
Power supply:	100 ... 240 V, 50/60 Hz
Warranty:	3 years

Type	max. load	Plug type	PK	Cat. No.
	g			
ADT 100-4	120	EU/UK/CH	1	4.711 753
ADT 200-4	220	EU/UK/CH	1	4.711 754
ADT 300-4	320	EU/UK/CH	1	4.711 755